

Visit our
website:



GIG
CYMRU
NHS
WALES | Bwrdd Iechyd Prifysgol
Caerdydd a'r Fro
Cardiff and Vale
University Health Board



Canolfan ar gyfer Gwerthuso,
Asesu Dyfeisiau ac Ymchwil Gofal Iechyd

CEDAR

Centre for Healthcare Evaluation,
Device Assessment and Research

CEDAR: Centre for Healthcare Evaluation, Device Assessment and Research

Quarterly Bulletin

Autumn 2024, Issue 8

CEDAR is committed to supporting patient-centred, evidence-based care through research and evaluation of health interventions, technologies, and NHS services.

IN THIS ISSUE

CEDAR News

Recent highlights from the team

Project Highlights

Find out which projects have been making strides in CEDAR.

Showcase section

Learn about Dr Christina Lloydwin's experience on the Welsh Crucible Course.

Staff Spotlight

Hear from Dr Elinor MacFarlane, Clinical Evaluation Scientist at CEDAR.

Imani Tariq

The CEDAR team would like to pay tribute to our friend and colleague Imani Tariq, who sadly died at the age of 43 in August this year. Imani joined our department in 2020 as an Administrator in CEDAR and had previously worked in Haematology. She was a key part of the administrative team, with involvement in many projects, and was very well liked by all. Imani will be greatly missed by the CEDAR team and all who knew her. Our thoughts and best wishes are with her children, husband, sister-in-law and wider family.



CEDAR News

- Congratulations to Katherine, Nia, Ayesha, Kathleen and Susan for the following recent publications:
 - [Application of the PAPERS Grading Criteria Within a Rapid Evidence Review to Determine the Psychometric and Pragmatic Properties of Patient Empowerment Tools](#)
 - [Ventilator-tube holder for mobilising patients with a tracheostomy: A pilot usability study \(TrachVest\)](#)
 - [A long way from Frome: improving connections between patients, local services and communities to reduce emergency admissions](#)
- A very warm welcome to Dr Elinor MacFarlane who has recently joined CEDAR as a Clinical Evaluation Scientist.
- Congratulations to Agatha-Grove Hills on her appointment as an Evaluation Scientist in CEDAR, following a period of redeployment from Cardiff & Vale Radiopharmacy.
- CEDAR are delighted to announce that the [Patient Empowerment Tools \(PET\) project](#) has recently gained ethical approval and started recruiting patients and staff from physiotherapy and podiatry. Participants will be testing and providing their views on different tools.
- CEDAR has gained Health and Care Research Wales (HCRW) approval for the project '[Identifying the barriers and facilitators for implementing Machine Learning to achieve Value-Based Healthcare in Wales](#)'.
- The [SPIN-VR study](#) has officially enrolled its first patient. This research aims to assess the use of home-based virtual reality physiotherapy for treating knee osteoarthritis.

PROJECT HIGHLIGHTS

Kurin Lock NICE Medical Technologies Guidance

CEDAR is pleased to have contributed to the development of NICE medical technology guidance on Kurin Lock. Kurin Lock is a device which aims to reduce contamination of blood culture samples by isolating the blood that could contain microbes from the skin at the site of venepuncture. NICE's guidance suggests that Kurin Lock can be used in the NHS to reduce contamination in blood culture collection in emergency departments with high blood culture contamination rates while more evidence is generated. The full recommendations were published in April 2024 and can be found here: [NICE Medical Technologies Guidance for Kurin Lock](#).

Economic Evaluation of IQ Endoscopes - Phase 3

CEDAR is conducting an independent economic evaluation of the IQ Endoscope, a single-use device, within Cardiff and Vale University Health Board. Funded by the Cardiff Capital Region, the project builds on Phase 2, where CEDAR evaluated the sustainability, cost-efficiency, and environmental impact of single-use versus reusable endoscopes. In Phase 3, the focus will be on addressing the key clinical areas as identified within phase 2 of the project, where the device could facilitate faster diagnoses and shorter hospital stays. We will be working closely with Miss. Jennifer Waterman, Colorectal Clinical Research Fellow in the Health Board, throughout the project. It will involve both retrospective and prospective patient audits, alongside cost modelling, to assess the potential financial and clinical impact of adopting the IQ Endoscope. The evaluation aims to validate findings from Phase 2 and further explore how the device could improve patient care and reduce healthcare resource use.



Team showcase - Welsh Crucible Course

Dr Christina Lloydwin, Senior Researcher, discusses her experience on the Welsh Crucible course, which she attended earlier in the year:

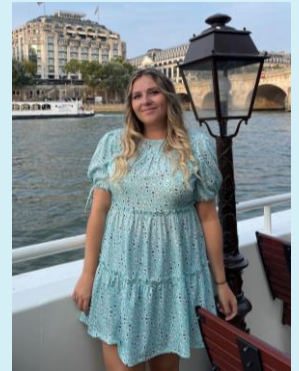
I was very grateful to have been selected for a place on the Welsh Crucible course this year, following in the footsteps of CEDAR colleagues Dr Susan Peirce, Dr Judith White and Megan Dale. Welsh Crucible is an award-winning programme of personal, professional and leadership development for the future research leaders of Wales. It takes place over three residential sessions where there are opportunities to meet other early to mid-career researchers from a wide variety of disciplines and gain insight from experts in the research landscape in Wales on how we might develop our research and make a difference in the world. My highlights from the experience include hearing from: Professor Wendy Lerner, President and Vice Chancellor of Cardiff University, about the future of Universities, Dr Ian Lewis, about a creative ice cream van campaign with Tenovus and UK Government science funding, and Professor Yamni Nigam on her Love a Maggot programme of work. But most importantly, what I will take from the course, is a new network of fantastic researchers in Wales and a renewed energy and confidence to forge my own path in research.



The 2024 Welsh Crucible course cohort.

STAFF SPOTLIGHT

In this issue's Staff Spotlight, we speak to Clinical Evaluation Scientist, Dr Elinor MacFarlane:



Tell us a bit about you and your role: I joined CEDAR at the beginning of September, following my PhD graduation earlier this summer. I'm a mixed-methods researcher by background, having previously worked on the introduction of incident reporting to primary eye care services in Wales and evaluating patient safety. I'm really looking forward to continuing to work on impactful projects at CEDAR.

What 3 words would you use to describe CEDAR?
Welcoming, Versatile & Unique

What is your favourite part of your job?
So far, it's been meeting such friendly team members from a range of different backgrounds and getting settled in to new and exciting projects.

Choose a superpower:
Teleportation, as I love going away, but I definitely don't love long flights!

What is a fact about you that people would be surprised by?
I remember every dream I've ever had! I'm also related to the Welsh singer Sir Tom Jones.